

Blue Book of Schools for Children of Foreign Personnel in Shanghai



Shanghai Academy of Educational Sciences
August, 2016

**Blue Book of Schools for
Children of Foreign
Personnel in Shanghai**

Shanghai Academy of Educational Sciences

August, 2016

Contents

Foreword	1
Part 1 Analysis of Supply and Demand of Schools for Children of Foreign Personnel in Shanghai	6
Part 2 Directory of Schools for Children of Foreign Personnel in Shanghai	25
Part 3 Distribution of Schools (Teaching Sites) for Children of Foreign Personnel in Different Districts of Shanghai	28
Part 4 Profile of Schools for Children of Foreign Personnel in Shanghai	33

Foreword

Shanghai is a modern city with a profound history. Boasting an advantaged port location and an open policy environment, since China's reform and opening up, Shanghai has increasingly become a center of foreign cultural exchange and world trade as well as a place where international elites concentrate. Since the new millennium, Shanghai has glowed with even more unique wisdom and vitality, and has attracted the world's high-end talents to make innovation and start businesses here with its essence of "tolerance to diversity, pursuit of excellence, open-mindedness and wisdom, generousness and modesty". Currently, with intensified efforts in developing the "Four Centers" and the globally influential technology innovation center, the city is accelerating the process of urban internationalization, advancing to the world and the future in a more magnificent momentum and pattern.

Authoritative data shows that the port import and export volume of Shanghai scaled over 1 trillion US dollars in 2014, with container throughput ranking first in the world for four consecutive years. In addition, 490 regional headquarters of multinational companies and 45 newly introduced regional headquarters of multinational companies registered here cumulatively, of which 15 were Asia-Pacific headquarters. By the end of 2014, 381 foreign R&D centers had settled in Shanghai, accounting for 1/4 in China and making the city attracting most foreign R&D centers in China (excluding Hong Kong, Taiwan and Macao).

Currently, the number of registered foreigners residing in Shanghai for more than half a year is generally stable and maintains at about 170,000. This amount ranks among the highest in China. The world's elites gather here to contribute world-class wisdom, management and

technology to Shanghai. Meanwhile, the government also devotes to create favorable investment, entrepreneurship, employment and living environment to attract and retain international talents, including various measures to solve the problem of schooling for their children in Shanghai.

First, with its basic education widely recognized in the world, Shanghai is able to provide high quality basic education environment to children of foreign personnel. Shanghai's basic education is characterized by overall balance, high quality and high efficiency. This is reflected by the fact that Shanghai's middle school students come out on top during the two PISA tests held by Organization for Economic Cooperation and Development in 2009 and 2012. More and more departments of foreign governments and educational administrations have come to investigate and study in Shanghai. In fact, children of foreign personnel residing in Shanghai are endowed with favorable geographical conditions to access to the high-quality and efficient basic education in Shanghai. Today, all of Shanghai's primary and secondary schools are open to foreign students, allowing foreign students to study in regular schools in primary and secondary schools.

Foreign people's children can apply for local public, private primary and secondary schools and pre-school institutions in Shanghai, and enjoy the same basic educational resources as local students. For parents holding a Type B residence permit in Shanghai, their children can receive free nine-year compulsory education in public elementary and junior high schools in Shanghai. For high school and pre-school education, the charges are the same with children holding household of Shanghai. To apply for the above schools, directly apply to the education bureau of at the place of residence for admission. At present, about 20% of children of foreign personnel and students from Hong Kong, Macao and Taiwan study in regular classes of local schools. With the improving opening up of Shanghai's education to the world in recent years, local schools have reasonably introduced excellent international education resources, making

them more attractive to children of foreign personnel and students from Hong Kong, Macao and Taiwan.

Second, in addition to attending the regular classes of local primary and secondary schools, independent established schools for children of foreign personnel in Shanghai has also increased the city's appeal to the world. These schools are operated by foreign institutions legally established in China, foreign-funded enterprises, international organizations in China and lawfully residing foreigners, providing basic education, pre-school and academic education institutions for the children of foreign personnel and students from Hong Kong, Macao and Taiwan who hold residence permit of Shanghai, including kindergartens, primary schools and general secondary schools. In 2012, Shanghai has 21 schools for children of foreign personnel, accounting for 18% of the total number of such schools in the country and ranking first among the 19 provinces and cities with schools for children of foreign personnel.

There are 29 independent schools for children of foreign personnel (including schools and extra tutorial for children of foreigners), which is the main choice of schooling for children of foreigners who reside in Shanghai. Courses offered include: American, British, country specific, IBO (short for International Baccalaureate Organization), and Chinese Culture programs. Of the children of foreign personnel residing in Shanghai and students from Hong Kong, Macao and Taiwan, 69% enrolled in such schools.

Third, Shanghai has a group of local secondary, primary schools and kindergartens with the specialized teaching and student management department—local school international division specially set up for foreign students and students from Hong Kong, Macao and Taiwan relying on the school teachers and other teaching forces. International division is relatively more independent, usually with special school buildings, dormitories, curriculum and daily management different from school proper. Currently, there are 8 international divisions of local schools in

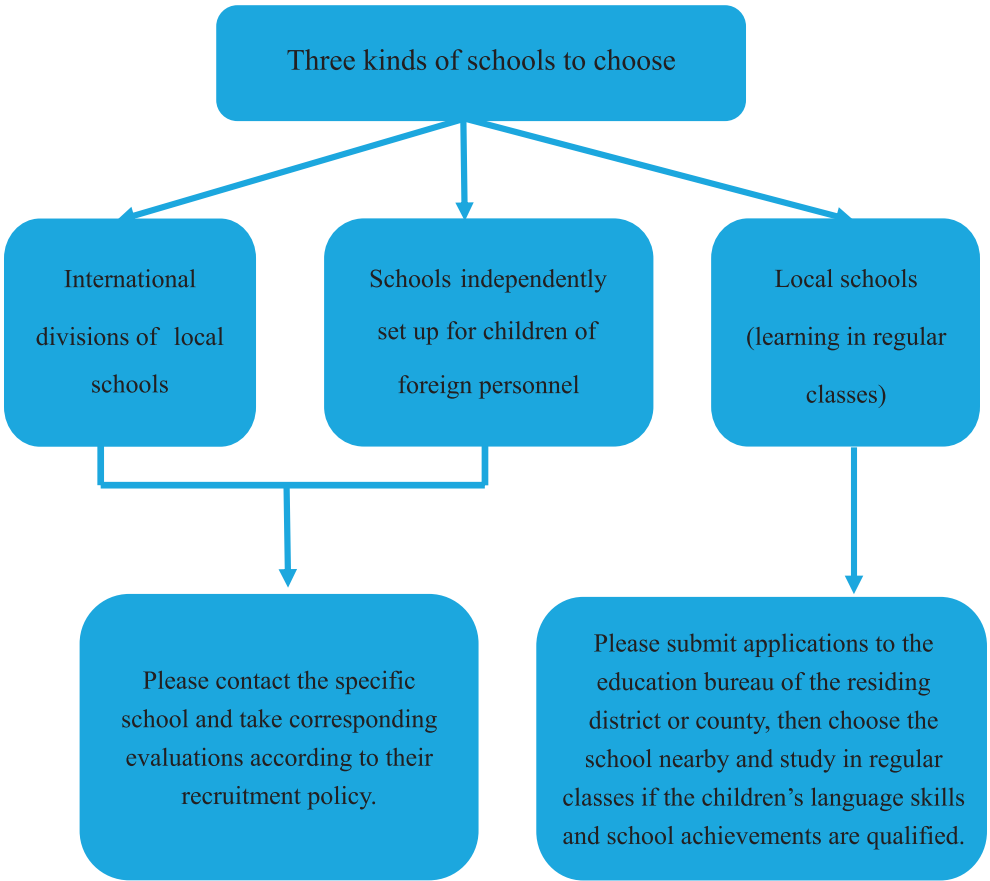
Shanghai, including kindergarten and high school. About 11% of children of foreign personnel and Hong Kong, Macao and Taiwan students residing in Shanghai enrolled in such schools.

The development of schools for children of foreign personnel in Shanghai not only meets their own development, but also addresses corresponding education demand for children of foreigners who reside in Shanghai. It is also an important guarantee for improving the internationalization level of Shanghai's education, optimizing the environment for talent introduction and build Shanghai as an international talent highland. "Chinese Culture on Campus" activity held by Shanghai Municipal Education Commission opens a window for children of foreign personnel to understand Chinese culture, and it has played a positive role in the promotion of Chinese culture. The exchange and interaction of teaching and different cultures between Shanghai schools for foreign students and local schools are also an important part and a highlight for the internationalization of Shanghai's education.

This report focuses on the schools independently set up for children of foreign personnel and the international division of local schools in Shanghai.

This report was completed by the Institute of Non-governmental Education of Shanghai Academy of Educational Sciences, with parties concerned participating in the research. Members of the research team include: Wang Yi (leader), Dong Shengzu, Gong Yanfei, Zhu Xingde, Dong Xiuhua, etc. International Exchange Office of Shanghai Municipal Education Commission and Shanghai Municipal Public Security Bureau Exit-Entry Administration provided important support and elaborate guidance for this research. Appropriate leaders of Shanghai Jian Qiao University and heads of international divisions of some schools for children of foreign personnel also contributed to the composition of the report.

Schematic of Schooling for Children of Foreign Personnel



Part 1 Analysis of Supply and Demand of Schools for Children of Foreign Personnel in Shanghai¹

1. Evolution of schools for children of foreign personnel in Shanghai

As the choice for 80% of foreign students in Shanghai, schools for children of foreign personnel (including international division of local schools) have been developing for over 30 years since the "reform and opening-up" from the 20th century. The development of schools for children of foreign personnel in Shanghai is an epitome of the opening up of education and the internationalization of Shanghai.

In the early 1980s, the department in charge of education of Shanghai Municipal People's Government began to help the consulates in Shanghai to set up affiliated schools. In 1988, the Shanghai Education and Health Office came up with the idea of foreigners investing in international school in Shanghai, which was approved by the government and relevant institutions. In 1993, the Shanghai Municipal Bureau of Education and the Municipal Foreign Affairs Office, in accordance with the *Administrative Measures of Shanghai Municipality for Running*

¹Data used in this report is collected from 3 sources: (1) The total number of foreign people and their accompanying children is from the Shanghai Exit-Entry Administration Bureau; (2) The number of students in local schools is derived from "Shanghai Preschool Education Information Management System" and "Shanghai Primary and Middle School Student Management System"; (3) The number of students in schools for children of foreign personnel and the number of available places are from the survey of schools for children of foreign personnel (by the end of November 2014).

Schools by Social Forces and the *Notice of on Issues Concerning Foreign Institutions or Individuals Running Schools in China* published by the State Education Commission (renamed) proposed *Opinions on Running International Schools in Shanghai* taking the conditions of Shanghai into consideration, and gave specific suggestions on construction principles and norms, reporting procedures and management methods of international schools, followed by the approval of *Administration Measures on Running International Schools in Shanghai by Overseas Groups or Individuals*, which was a further standardization and supplement to the main issues in the *Opinions*. In 1995, the State Education Commission promulgated the *Interim Administrative Measures of the State Education Commission of the People's Republic of China on the Establishment of Schools for Children of Foreign Personnel*, setting provisions on the application conditions, information submission, approval process, operating authority, enrollment targets, teachers employment and sources for running an international school, and allowing the people's governments of provinces, autonomous regions and municipalities directly under the Central Government to formulate specific provisions in accordance with these *Measures*.

In 1995, Shanghai had a total of 5 schools for children of foreign personnel, accommodating up to 600 students. In 1998, there were 15 international schools in Shanghai with more than 3,300 students at school. In 2004, there were 19 international schools, 5 international divisions of local schools, and 7 tutorial centers for children of foreign personnel. In 2007, there were 20 international schools, 5 international divisions of local schools, 7 tutorial centers; by 2010, the number increased to 32. By June 2016, there were 37 schools for children of foreign personnel in Shanghai (including the international divisions of local schools and tutorial centers for children of foreign personnel), with

a total enrollment of 29,000 (excluding students of tutorial centers). After 20 years of development, the number of institutions for children of foreign personnel in Shanghai has increased by sevenfold, and the number of students enrolled has increased by 48 times. To date, Shanghai has formed a complete school system with diversified courses for foreign nationals to meet the needs of children of foreigners who live in Shanghai and students from Hong Kong, Macao and Taiwan, thus addressing their concerns and providing Shanghai with a solid guarantee to optimize the environment for talent introduction.

2. The overall trend of the schooling needs of children of foreign personnel in Shanghai is stable²

The number of foreigners under 18 years old staying in Shanghai is relatively stable and has remained at around 31,200 (excluding those from Hong Kong, Macao and Taiwan) in the past three years, accounting for 18% of all foreigners staying in Shanghai. Although foreigners are distributed in every district of Shanghai, the population sizes of Pudong New Area, Changning District, Minhang District, Xuhui District, and Qingpu District are relatively larger, accounting for more than 85% of the total number of foreigner in Shanghai. Therefore there is a relatively larger demand for schooling of children of foreign personnel in these areas. For foreigners under 18 years old, the number of those from Japan, U.S. and Korea ranks among the top three, accounting for nearly 40% of the city's total foreigners in Shanghai. Among the foreigners under the age of 18, the population aged 7-12 is the largest, accounting for 40% of the total foreign population. In other words, the absolute number with education needs of primary school is the largest.

²Unless otherwise stated, data in this part of the content referring to the foreign people and their children is derived from those of foreign people and their children registered in the public security department and living in Shanghai for more than half a year.

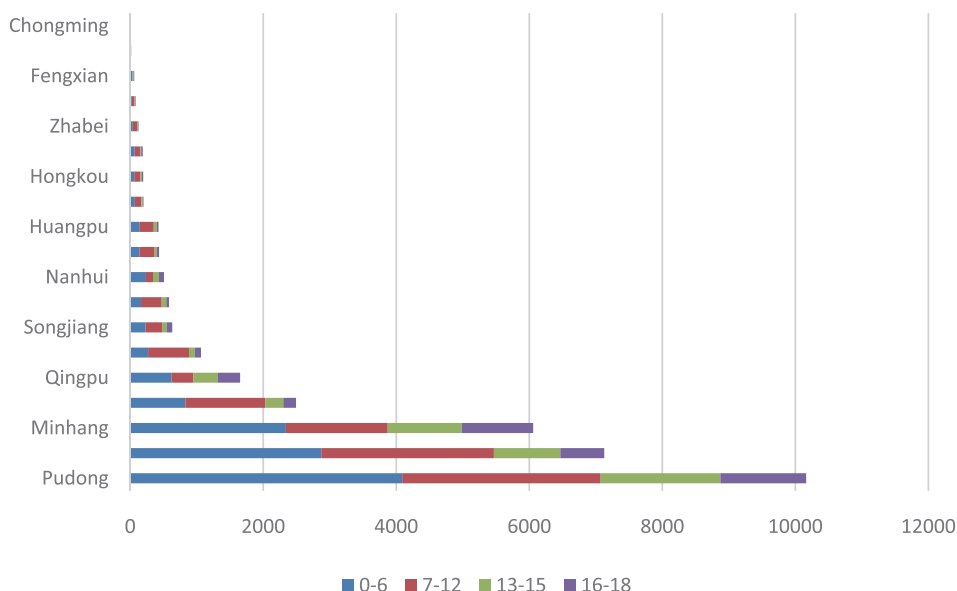


Fig. 1 The amounts of children of foreign personnel of different age groups in districts of Shanghai

From the perspective of quantity, the city's foreigners under the age of 18 are mainly from Japan, U.S., South Korea, France, Germany, Britain as well as other countries. Japan, U.S. and South Korea at the top three account for 50% of the population, with countries and areas other than the six ones mentioned above accounting for 32%.

Foreigners in Shanghai are mainly aged from 7 to 12, accounting for 40% of all foreigners between 0 and 18 years old, while 29% of foreigners are aged from 0-6, 17% are aged from 13-15 and 14% 16-18. That is to say, foreign students with the primary school age account for the largest number and kindergarten school-age foreign students rank the second, followed by foreign students with junior high school and senior high school ages.

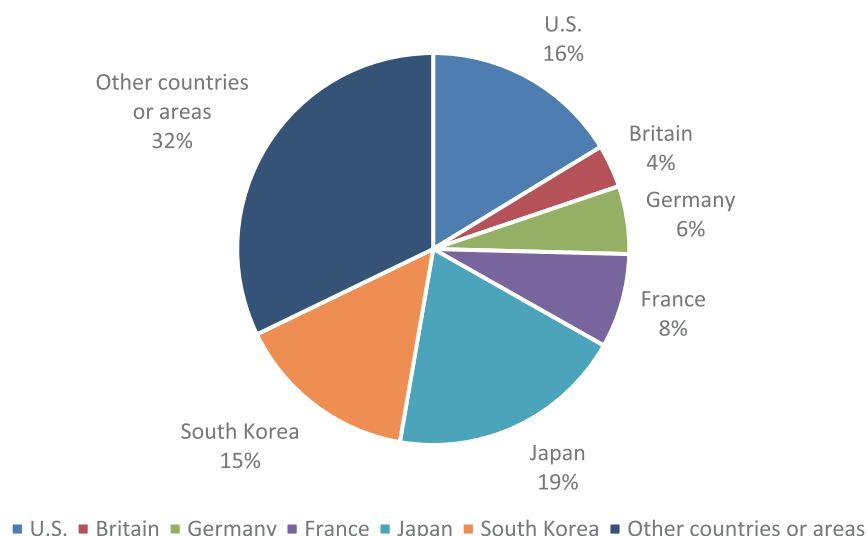


Fig. 2 Country (Region) composition of children of foreign personnel in Shanghai (excluding Hong Kong, Macao and Taiwan)

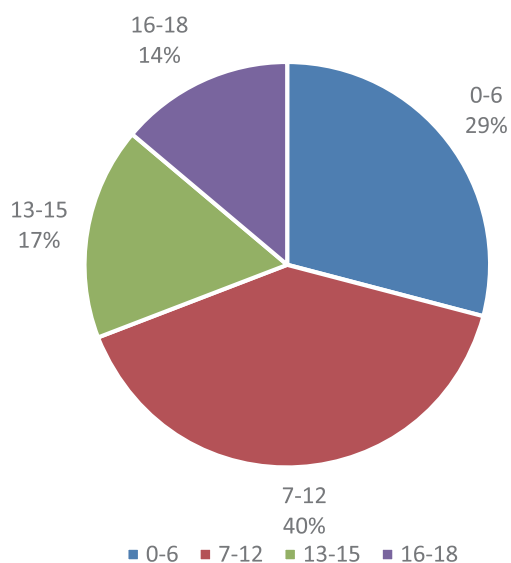


Fig. 3 Ages of children of foreign personnel in Shanghai

3. The total number of schools for children of foreign personnel in Shanghai is sufficient

Schools for children of foreign personnel are the main institutions

for foreign students studying in Shanghai. Over 80% of the foreign students in Shanghai and students from Hong Kong, Macao and Taiwan are studying at schools for children of foreign personnel, including the international divisions of local schools. Thirty-seven schools for children of foreign personnel in Shanghai and their teaching points are located in the seven districts where foreigners concentrate. Among them, the Pudong New Area has the largest number of schools as well as the largest number of students. Among the students in the schools for foreign students, the majority of them are from Japan, U.S. and South Korea. American courses, English courses and international courses are the main courses offered by the schools for children of foreign personnel. More than 70% of the US, German, French and Japanese students choose their own national curriculum. American courses are the most popular courses for non-American students.

(1) Eighty percent foreign students under the age of 18 in Shanghai enroll in the schools for children of foreign personnel

By the end of 2014, there were about 25,000 foreign students enrolled in schools for children of foreign personnel (including the international divisions of local schools, excluding tutorial schools), accounting for about 80% of the foreigners under 18 years of age living in Shanghai.

(2) Schools for children of foreign personnel concentrated in seven districts basically meet the schooling needs of children of foreign personnel in each district

By June 2016, there are 37 schools for children of foreign personnel. Among them, there are 22 independent schools for children of foreign personnel, 8 international divisions of local schools and 7 tutorial centers. Given that some schools have 2-4 school sites, there are totally 60 teaching sites of schools for children of foreign personnel located in

seven districts. Among them, the schools and teaching sites in Pudong New Area account for 40%, followed by Changning District, Minhang District, Qingpu District, Xuhui District, Yangpu District and Hongkou District (see Fig. 4).

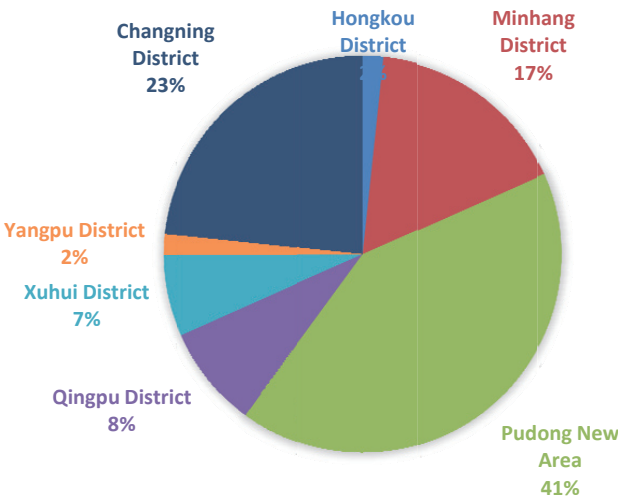


Fig. 4 Regional distribution of schools for children of foreign personnel in Shanghai

Correspondingly, 29,000³ students of schools for children of foreign personnel are also concentrated in the seven districts. The number of foreign students in the seven districts account for 93% of the total number of foreign students of Shanghai. Among them, schools for children of foreign personnel in the Pudong New Area have more than 10,000 students (accounting for 33%). Minhang, Changning, Xuhui and Qingpu districts have more than 2,000 students each. Except for Changning District, the number of foreign students in each district is higher than the total number of foreigners under the age of 18 in that district, indicating the schooling demand of foreign students in that district can be met and foreign students outside the district have also been attracted to the schools

³Students of schools for children of foreign personnel include about 4,000 students from Hong Kong, Taiwan or Macao of China.

in those districts.

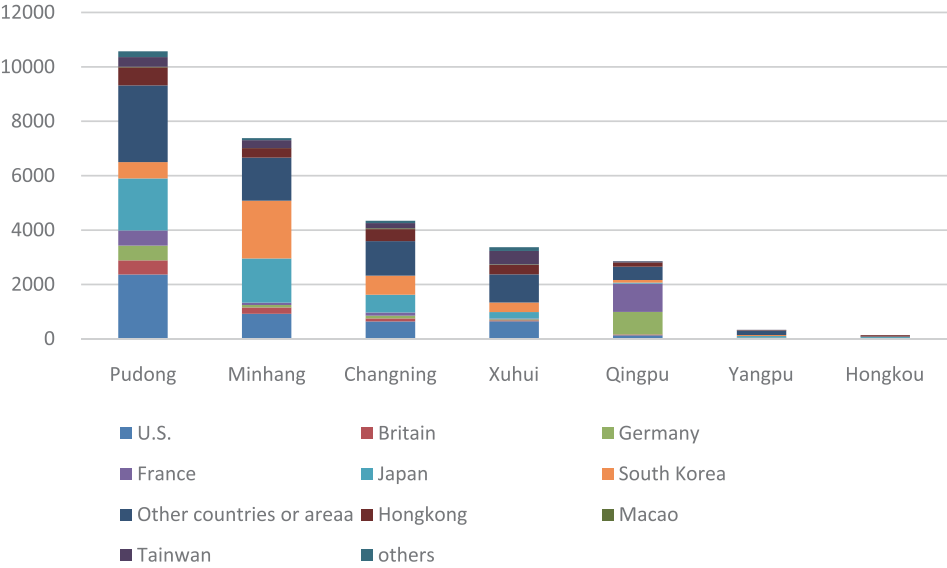


Fig. 5 Statistics of students in schools for children of foreign personnel in various districts of Shanghai

(3) U.S., Japan and South Korea have the top three amounts of students and most foreign students prefer schools for children of foreign personnel with their own countries' backgrounds

Fig. 6 depicts the country (region) composition of the students of schools for children of foreign personnel in Shanghai (excluding tutorial centers). Among them, the number of students in the U.S. (16%), Japan (16%) and Korea (14%) ranked the top three and account for more than 60% the total number of foreign students together with France (6%), Germany (6%) and the UK (3%). This is similar to the total number and proportion of foreigners under the age of 18 in the city. In addition, students from Hong Kong, Macao, Taiwan and other areas account for 14% of students in schools for children of foreign personnel.

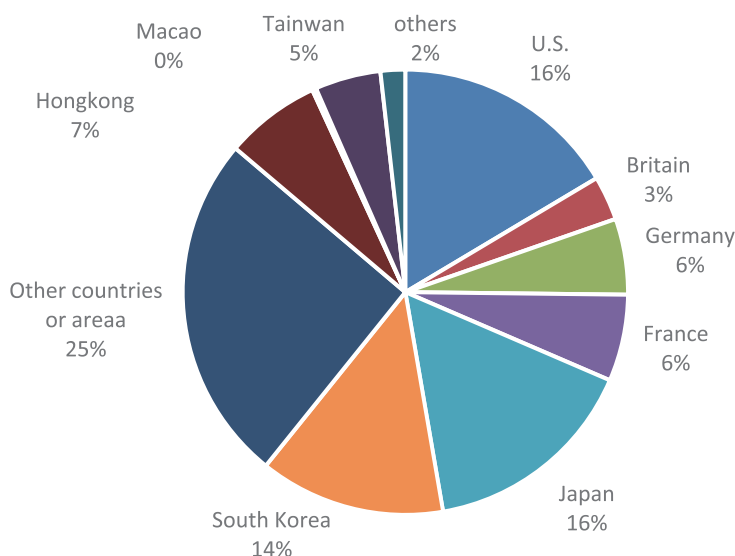


Fig. 6 Country (region) composition of students of schools for children of foreign personnel

From the statistics according to the country (region) composition of students of schools for children of foreign personnel, it can be found that most students have chosen the schools for children of foreign personnel with their own countries' backgrounds.

Taking Minhang District as an example, Korean students account for 29% of foreign students in the District, and Japanese students account for 22%, so the sum of these two countries account for more than half of foreign students in the District. This indicates the existence of two large scale Korean and Japanese schools in the District.

Taking Xuhui District as an example, students from Hong Kong, Macao and Taiwan of China and other countries account for 60% of foreign students in the District, this maybe due to the international divisions of Shanghai High School and Singapore International School are located in the district.

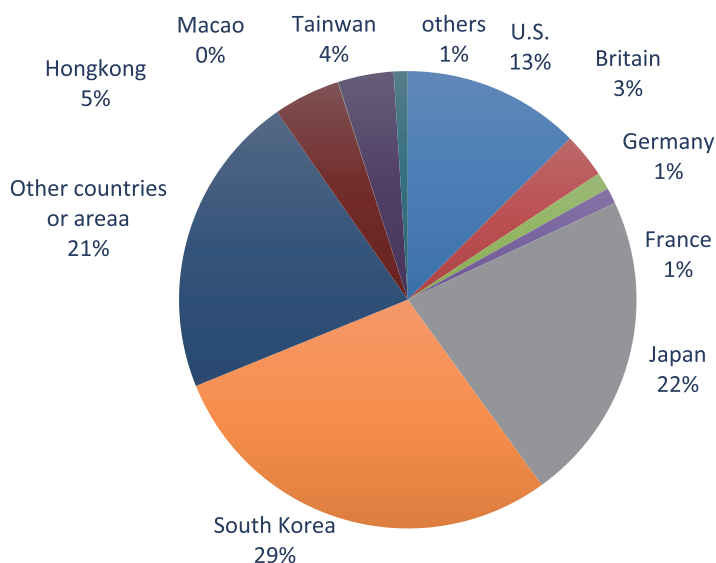


Fig. 6-1 Country (region) composition of students of schools for children of foreign personnel in Minhang District

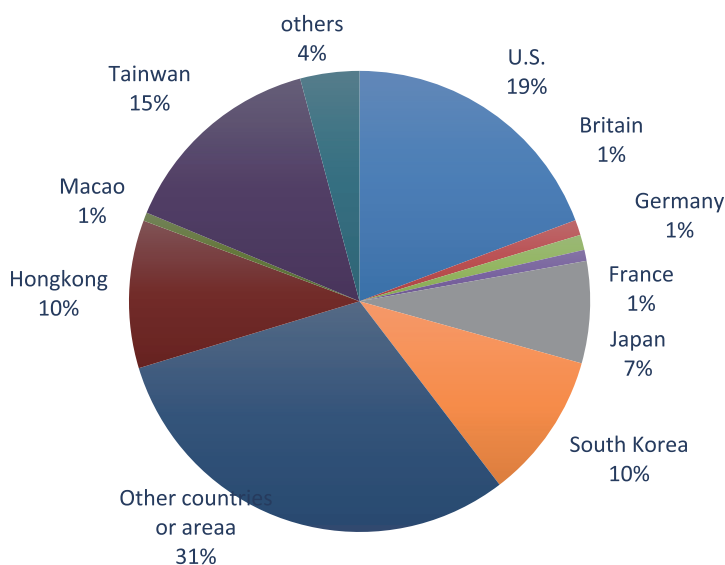


Fig. 6-2 Country (region) Composition of Students of Schools for children of foreign personnel in Xuhui District

Finally, taking Qingpu District as an example. French and German students in the District account for 36% and 29% respectively and

account for 65% of the total number of foreign students in the District, which should be closely related with the fact that French schools and German schools are located in this district.

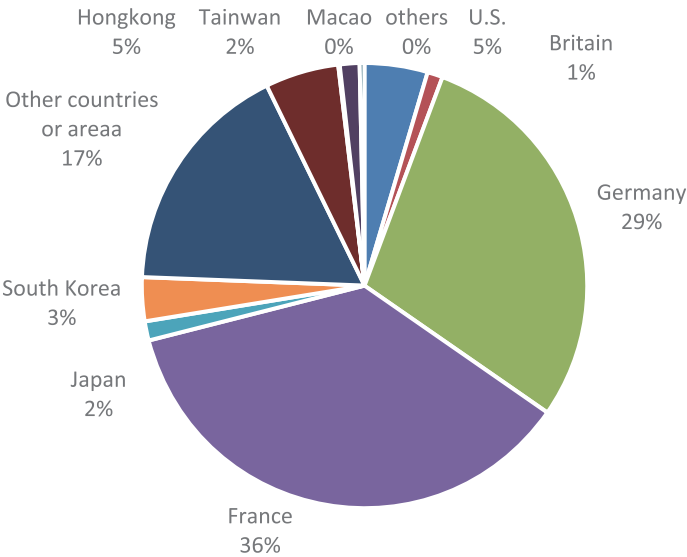


Fig. 6-3 Country (region) Composition of Students of schools for children of foreign personnel in Qingpu District

(4) Nearly half of children of foreign personnel go to regular classes in local kindergartens

Overall, the number of students in kindergartens, primary schools, junior high schools and senior high schools are 3,700, 9,900, 6,100 and 5,300 and account for 15%, 40%, 24% and 21% of the total respectively. The proportion of foreigners under the age of 18 in Shanghai is 29%, 40%, 17% and 14% respectively. From the proportion of view, the number of students in the kindergarten for children of foreign personnel account only around half of the city's children of foreign personnel who aged 0 to 6. This indicates that on the one hand, there are groups of children of foreign personnel who have not yet reached the admission

age; on the other hand, more children of foreign personnel go to regular classes in local kindergartens.

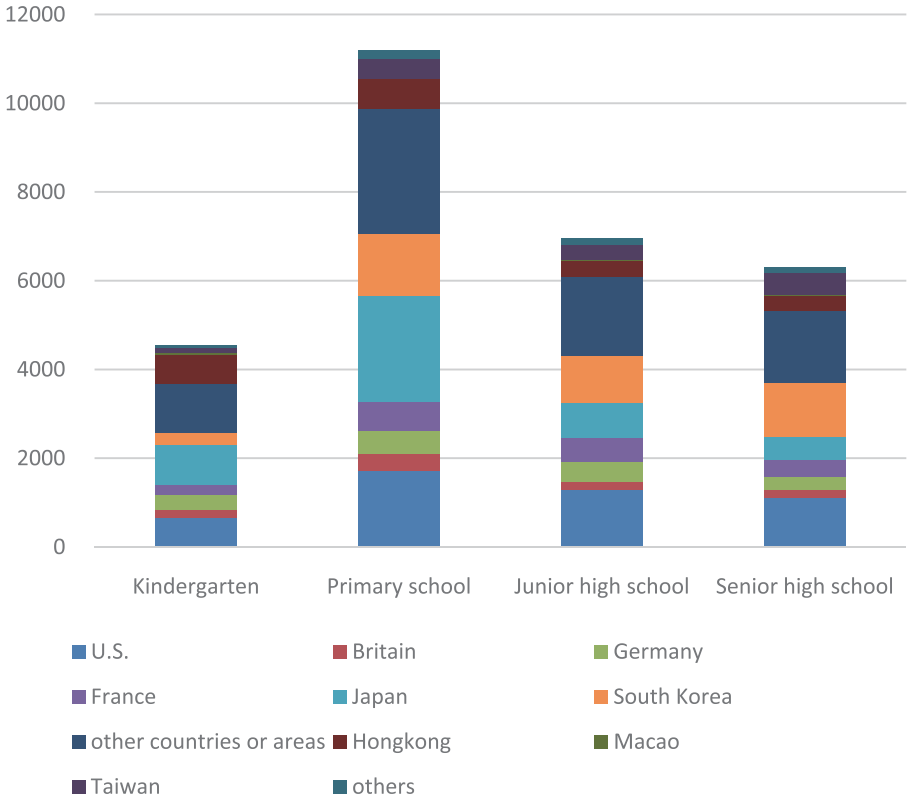


Fig.7 Country (Region) Composition of Students of Schools for children of foreign personnel at various phases of schooling

Fig. 7 details the country (region) composition of students of schools for children of foreign personnel at different phases of schooling. Japanese students take the largest proportion in students of kindergartens and primary schools; the American and South Korean students accounted for the largest number of junior high school and high school students respectively.

(5) American courses, British courses and IB courses account for 70% of courses offered by schools for children of foreign personnel in

Shanghai

The education system of schools for children of foreign personnel mainly follows that of North America and Europe and gives priority to European and American courses and international courses. Courses are divided into three categories. First, the International Baccalaureate Program (IB Program). Such courses are taught in English and take the IBO syllabus as the teaching objectives, and most students will go to universities in Britain and North America after graduating from here. Second, the national curriculum. The program is based on the program of the host country, and adopts the synchronized teaching plan and the required curriculum. The teaching language is the native language of the host country and the students will go to university of the country after graduation. These schools include Shanghai Japanese School, British International School Shanghai, Shanghai French School and German School Shanghai, etc. Third, the combination of Chinese and foreign courses. These courses are designed according to the specific needs of the students and combined with domestic and international courses. The teaching language is English, Chinese and specific foreign languages and students can go to European, American or Chinese universities after graduation. For instance, the International Division of Shanghai Jincai High School and the International Division of Shanghai High School are of this type.

The number of American, British and IB international courses rank among the top three of courses offered by schools for children of foreign personnel, with proportion of 27%, 26%, and 15%, respectively.

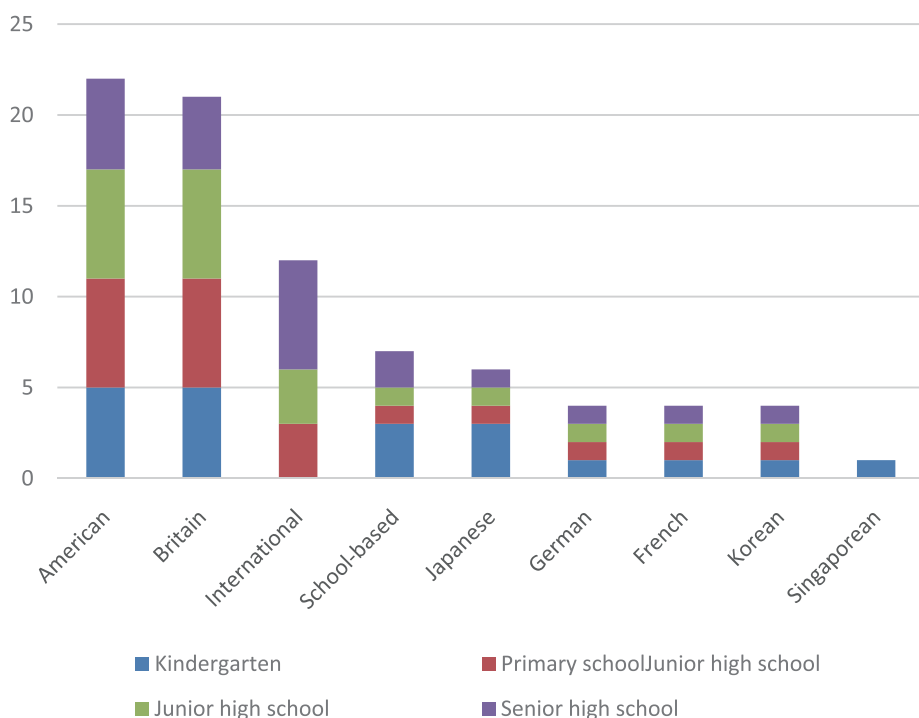


Fig. 8 Number of Schools for children of foreign personnel with different curriculums in Shanghai

For students of different nationalities (regions), more than 70% students of the US, Germany, France and Japan choose the courses of their own country. Nearly half of the British students choose the British curriculum and more than 30% chose international courses. The proportions of Korean students choosing American courses and Korean courses are both 35%. 39%, 26%, and 25% of students of other countries choose American courses, international courses and UK courses respectively. Half of Hong Kong, Macao and Taiwan students choose American courses.

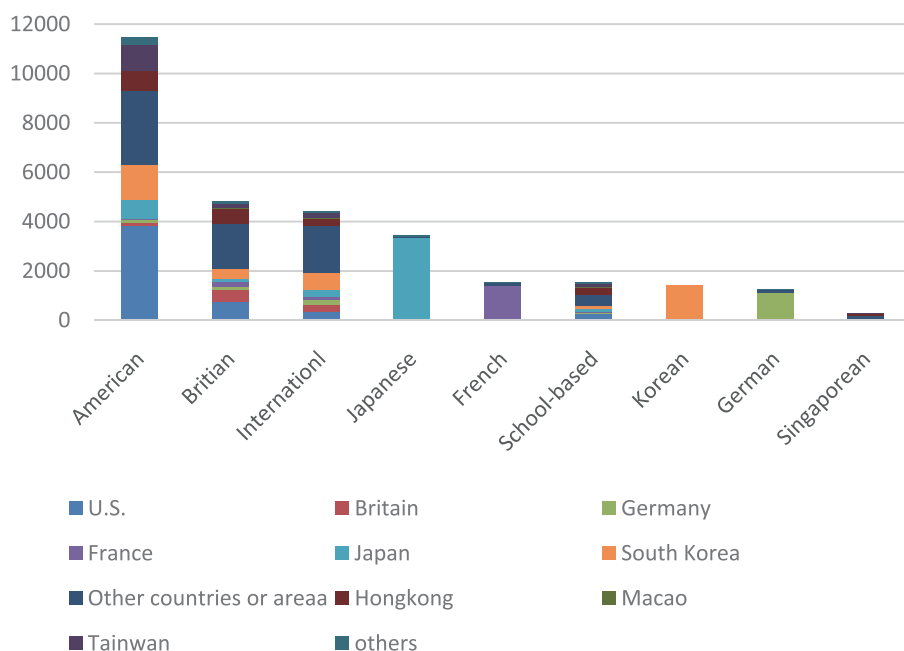


Fig. 9 Selection of courses by children of foreign personnel from different countries (regions)

4. Schools for children of foreign personnel in Shanghai are platitudinous, with vacancies in different districts and schooling phases

At present, there are nearly ten thousand vacant places in schools for children of foreign personnel in Shanghai, which are able to offer enough educational opportunities for foreign students there. The seven districts with school for children of foreign personnel have vacant places except for Changning District. While Minhang District and Xuhui District near Changning District have adequate spare places, so some schooling needs of foreign students in Changning District can be solved by short-distance traffic. By looking at the phases of schooling, it can be found that there are plenty of spare places from kindergarten to senior high school. Generally, the number of foreign people in Shanghai is relatively stable over the past three years, and Shanghai is still capable of taking in more foreign

students.

(1) Sufficient vacant places in schools for children of foreign personnel

Looking at the total number, there are currently 38,576 places in schools for children of foreign personnel in Shanghai, nearly 10,000 more than the actual number of 28,898 students, absolutely capable to meet the needs of children of foreign personnel's schooling needs. The gap between the number of school places and the actual number of students in schools for foreign nationals in each district also reflect the characteristics of the full supply of these schools. Among them, the number of vacant places of schools for children of foreign personnel in Minhang District is up to 3,828, and the number of vacant places in Pudong New Area was 3,482.

(2) Adequate vacant places in other six districts except for Changning District

According to the comparison of the number of foreigners under 18 years of age and the number of school places for children of foreign personnel in different districts. Except for Changning District, the number of places in schools for children of foreign personnel is larger than the number of foreigners under 18 in other districts, namely Pudong New Area, Minhang District, Xuhui District and Qingpu District. Generally, each district is able to meet the needs of foreign students in the vicinity. The number of foreigners under 18 in Changning District is larger than that of places supplied in schools for children of foreign personnel, although it is difficult to meet the schooling need of these children through the schools for children of foreign personnel in the District, there are many vacant places in Minhang District and Xuhui District nearby, so some schooling needs of foreign students in Changning District can also be addressed (see Fig. 10).

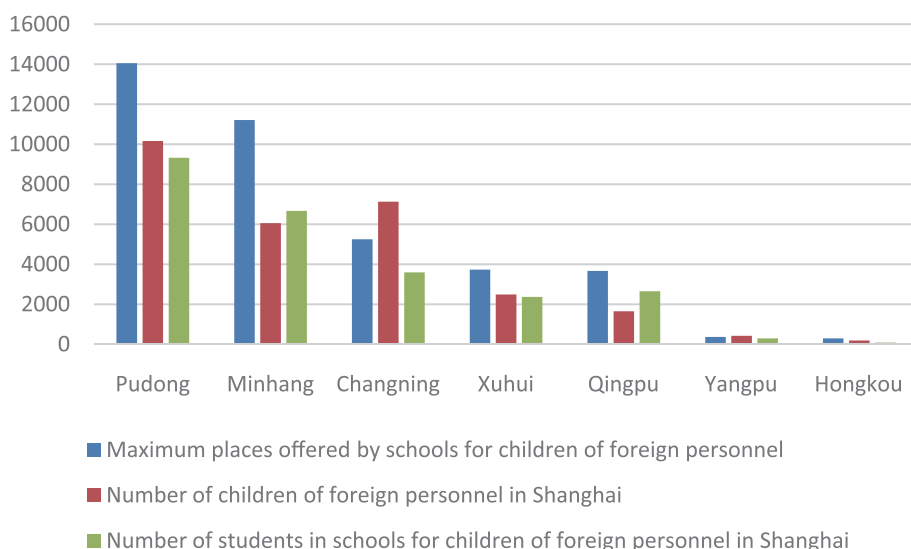


Fig. 10 Maximum places in schools for children of foreign personnel in various districts and counties VS. Number of children of foreign personnel in the district

(3) Spare places in each phase of kindergartens, primary schools and secondary schools

As of March 2016, there were a total of 9,677 places left in schools (excluding tutorial centers) for children of foreign personnel in Shanghai. Figure 11 shows that primary schools have the largest number of vacancies, followed by senior high schools, junior high schools and kindergartens successively, with vacancies of 3,780, 2,208, 2,152 and 1,537 respectively.

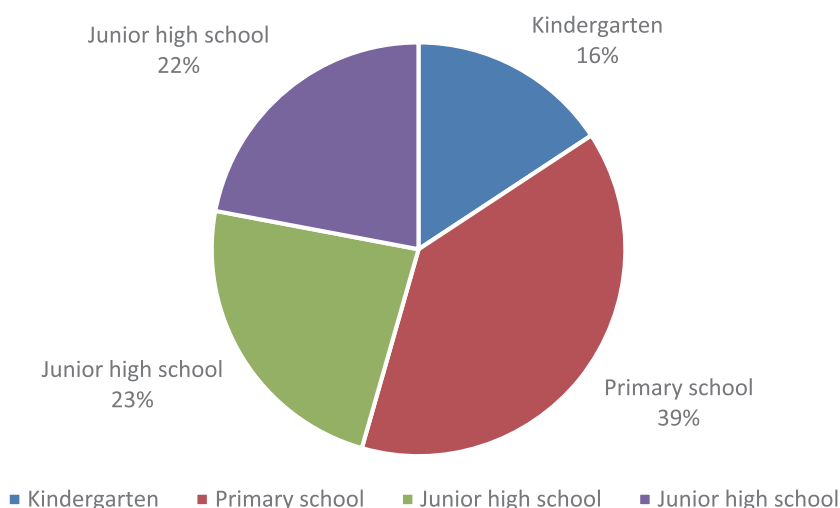


Fig. 11 Spare places in schools for children of foreign personnel at different phases

In terms of the number of foreigners under 18 living in Shanghai and the number of school places for children of foreign personnel, the number of school places for children of foreign personnel at primary, middle and high schools is higher than that of foreigners under the age of 18 in each phase of schooling, so the needs of the foreign students to study in nearby school in the district can generally be satisfied (see Fig. 12). There are two reasons for the number of pre-primary education places being greater than the number of foreign children in Shanghai: first, children of foreign personnel live in Shanghai includes non-school-age infants and young children; second, some foreign people choose regular classes in local kindergartens.

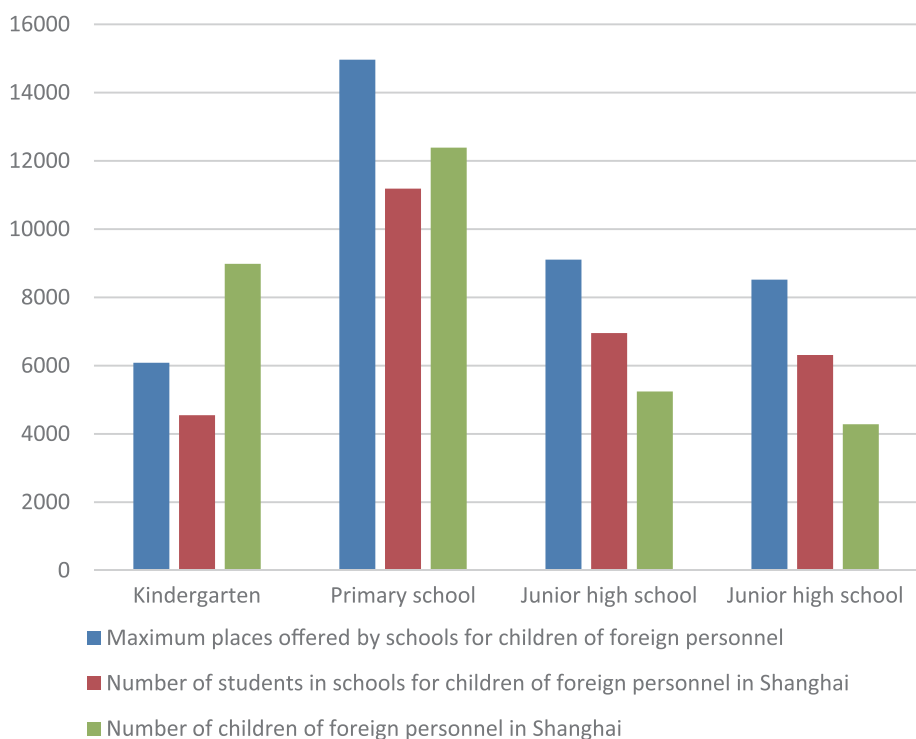


Fig. 12 Maximum places in schools for children of foreign personnel VS. the Number of children of foreign personnel in various phases

Part 2 Directory of Schools for Children of Foreign Personnel in Shanghai

No.	School Name	English Name	Address	Educational System	Curriculum
1	上海美国学校	Shanghai American School	No. 258, Jinfeng Road	Kindergarten-senior high school	American
2	上海日本人学校	Shanghai Japanese School	No. 3185, Hongmei Road	Primary-senior high school	Japanese
3	上海耀中国际学校	Yew Chung International School of Shanghai	No. 11-15, Shuicheng Road	Infant class-high school	British, IB, School-based
4	上海德国学校	German School Shanghai	No. 350, Gaoguang Road	Kindergarten-senior high school	German
5	上海法国学校	Shanghai French School	No. 350, Gaoguang Road	Kindergarten-senior high school	French
6	上海新加坡国际学校	Shanghai Singapore International School	No. 301, Zhujian Road	Kindergarten-senior high school	Singaporean, IB, British
7	上海长宁国际学校	Shanghai Community International School	No. 1161, Hongqiao Road	Kindergarten-senior high school	American
8	上海虹桥国际学校	Rainbow Bridge International School	No. 218, South Yili Road	Kindergarten-senior high school	IB, School-based
9	上海协和国际学校	Concordia International School Shanghai	No. 999, Mingyue Road	Kindergarten-senior high school	American
10	上海韩国学校	Shanghai Korean School	No. 355, Lianyou Road	Primary school-senior high school	Korean
11	上海英国学校	The British International School, Shanghai	No. 600, Kangqiao Bandao, Lane 2729, Hunan Highway	Kindergarten-senior high school	British, IB
12	上海李文斯顿美国学校	Livingston American School Shanghai	No. 580, Ganxi Road	Kindergarten-enior high school	American
13	上海德威英国国际学校	Shanghai Dulwich International School	No. 266, Lan'an Road	Infant class-high school	British, IB
14	上海西华国际学校	Western International School of Shanghai	No. 555, Lianming Road	Kindergarten-senior high school	IB, School-based
15	上海不列颠英国学校	Britannica International School, Shanghai	No. 1988, Gubei Road	Kindergarten-senior high school	British
16	上海惠灵顿国际学校	Wellington College International Shanghai	No. 688, Jiyang Road, No. 1500, Yaolong Road	Kindergarten-senior high school	British

No.	School Name	English Name	Address	Educational System	Curriculum
17	上海哈罗外籍人员子女学校	Shanghai Harrow School for Children of Foreign Nationality	No. 588, Gaoxi Road, Pudong New Area	Kindergarten-senior high school	British
18	奥伊斯嘉上海日语幼儿园	Oisca Shanghai Japanese Kindergarten	No. 16, Lane 445, West Tianshan Road	Kindergarten	Japanese
19	上海美丘第一幼儿园	Shanghai Utsukushigaoka Montessori Kindergarten	No. 788, Hongxu Road (Mandarine City)	Kindergarten	Japanese
20	上海东进日本人幼儿园	Shanghai Toshin Japanese Kindergarten	No. 32, Lane 820, Tianshan Road	Kindergarten	Japanese
21	上海泰宁国际幼儿园	Tiny Tots International Preschool and Kindergarten	No. 43, West Fuxing Road	Kindergarten	American
22	上海恩吉尔幼儿园	Shanghai Angel Kindergarten	No. 375, Hongzhong Road	Kindergarten	Korean
23	上海宋庆龄幼儿园国际部	Shanghai Soong Ching Ling Kindergarten	No. 3908, Hongmei Road	Kindergarten	British
24	上海中学国际部	Shanghai High School International Division	No. 400, Shangzhong Road	Primary school-senior high school	American
25	华东师大二附中国际部	The International Division, No.2 High School Of East China Normal University	No. 555, Chenhui Road	High school	School-based
26	上海外国语大学附属外国语学校国际部	Shanghai Foreign Language School Affiliated To SISU, International Division	No. 295, North Zhongshan Road No. 1	High school	IB
27	上海市进才中学国际部	Shanghai Jincai High School International Division	No. 26, Eshan Road	K1-12	IB, School-based
28	复旦大学附属中学国际部	International Division, High School Affiliated to Fudan University	No. 325, Guoquan Road	Primary-senior high school	IB
29	上海市实验学校国际部	Shanghai Experimental School International Division	No. 1, Tianlin 13 th Village (primary school), No. 300, Dongming Road (high school)	Primary-junior high school	British, School-based
30	上海宋庆龄学校国际部	Shanghai Soong Ching Ling School International Division	No. 2, Zhao Lane Yehui Road	Grade 1-Junior 2	American

No.	School Name	English Name	Address	Educational System	Curriculum
31	上海日本人教育 补习中心	Shanghai Educational Academy	Rm 503, 5/F, Victoria Business Building, No. 118 East Ronghua Avenue	Tutorial	Japanese
32	上海东进日本人 补习中心	Toshin International After School	No. 902, Huamu Road	Tutorial	Japanese
33	上海飞翔日本人 补习中心	Shanghai Hishou Japanese Continuation Study Center	Rm. 504-505, Victoria Business Building, No. 96, East Ronghua Avenue	Tutorial	Japanese
34	上海青海韩国人 补习中心	Shanghai Qinghai Korea Academy	Rm. 705, North Building Vanke Square, No. 37, South Shuicheng Road	Tutorial	Korean
35	上海新大一 韩国人补习中心	Shanghai Kosei Academy	3/F, Block C, No. 96, East Ronghua Avenue	Tutorial	Korean
36	上海一麦日本人 补习中心	Shanghai Imai Nihon Jinhosyutyushin	A313, No. 2633, West Yan'an Road	Tutorial	Japanese
37	上海骏台日本人 补习中心	Shanghai Sundai School	Rm. B308, Shanghai-Mira Commercial Center, No. 2633, West Yan'an Road	Tutorial	Japanese
38	上海杨浦法国 学校 (筹)	Shanghai Yangpu French School (in preparation)	Yangpu District	Kindergarten- senior high school	French
39	上海杨浦德国 学校 (筹)	Shanghai Yangpu German School (in preparation)	Yangpu District	Kindergarten- senior high school	German

Part 3 Distribution of Schools (Teaching Sites) for Children of Foreign Personnel in Different Districts of Shanghai

1. Pudong District

No.	School (Teaching Site)	English Name	Address	Educational System
1	上海美国学校	Shanghai American School	No. 1600, Lingbai Road, Sanjia Port	Kindergarten-senior high school
2	上海日本人学校	Shanghai Japanese School	No. 277, Jinkang Road	Primary-senior high school
3	上海耀中国际 学校	Yew Chung International School of Shanghai	No. 1817, Huamu Road	Kindergarten - pri- mary school
4	上海耀中国际 学校	Yew Chung International School of Shanghai	No. 1433, Dongxiu Road	Primary - senior high school
5	上海德国学校	German School Shanghai	No. 1100, Jufeng Road	Kindergarten - senior high school
6	上海法国学校	Shanghai French School	No. 1555, Jufeng Road	Kindergarten - junior high school
7	上海长宁国际 学校	Shanghai Community International School	No. 198, Hengqiao Road	High school
8	上海长宁国际 学校	Shanghai Community International School	No. 800, Xiuyan Road	Kindergarten - junior high school
9	上海协和国际 学校	Concordia International School Shanghai	No. 999, Mingyue Road	Kindergarten - senior high school
10	上海英国学校	The British International School, Shanghai	No. 600, Kangqiao Ban- dao, Lane 2729, Hunan Highway	Kindergarten - senior high school
11	上海德威英国 国际学校	Shanghai Dulwich International School	No. 266, Lan'an Road	Primary - senior high school
12	上海德威英国 国际学校	Shanghai Dulwich International School	No. 425, Lan'an Road	Kindergarten
13	上海惠灵顿 国际学校	Wellington College International Shanghai	No. 1500, Yaolong Road	Kindergarten - junior high school
14	上海哈罗外籍 人员子女学校	Shanghai Harrow School for Children of Foreign Personnel	No. 588, Gaoxi Road	Kindergarten - senior high school

No.	School (Teaching Site)	English Name	Address	Educational System
15	奥伊斯嘉上海 日本语幼儿园	Oisca ShanghaiJapanese Kindergarten	No. 200, North Linyi Road	Kindergarten
16	上海美丘第一 幼儿园	Shanghai Utsukushigaoka Montessori Kindergarten	Donghe Apartment, Lane 66, Dongxiu Road	Kindergarten
17	上海中学国际部	Shanghai High School International Division	No. 38, Huoxiang Road	Primary school
18	华东师大 二附中国际部	The International Division No.2 High School Of East China Normal University	No. 555, Chenhui Road	High school
19	上海市进才中学 国际部	Shanghai Jincai High School International Division	No. 26, Eshan Road	Primary - senior high school
20	上海市实验学校 国际部	Shanghai Experimental School International Division	No. 1, Lane 1316, South Matou Road	Primary school
21	上海市实验学校 国际部	Shanghai Experimental School International Division	No. 300, Dongming Road	Junior High School
22	上海日本人 教育补习中心	Shanghai Educational Academy	1-2/F, No. 1849, Jinxiu Road	Primary - senior high school
23	东进上海日本人 补习中心	Shanghai Toshin International After School	No. 902, Huamu Road	Primary - senior high school
24	上海一麦日本人 补习中心	Shanghai Imai Nihon Jinhosyutyushin	Rm. 202, Lane 168, Jinyan Road	Kindergarten - senior high school

2. Xuhui District

No.	School (Teaching Site)	English Name	Address	Educational System
1	上海新加坡国际学校	Shanghai Singapore International School	No. 1455, Huajing Road	Kindergarten-senior high school
2	上海泰宁国际幼儿园	Tiny Tots International Pre-School and kindergarten	No. 43, West Fuxing Road	Kindergarten
3	上海中学国际部	Shanghai High School International Division	No. 989, Baise Road	Primary-senior high school
4	上海市实验学校 国际部	Shanghai Experimental School International Division	No. 1, Tianlin 13th Village	Primary school

3. Changning District

No.	School (Teaching Site)	English Name	Address	Educational System
1	上海耀中国际学校	Yew Chung International School of Shanghai	No. 11, Shuicheng Road	Kindergarten - primary school
2	上海耀中国际学校	Yew Chung International School of Shanghai	No. 18, West Ronghua Road	High school
3	上海长宁国际学校	Shanghai Community International School	No. 1161/2212, Hongqiao Road	Kindergarten - senior high school
4	上海虹桥国际学校	Rainbow Bridge International School	No. 218, South Yili Road	Kindergarten - junior high school
5	上海李文斯顿美国学校	Livingston American School Shanghai	No. 580, Ganxi Road	Kindergarten - senior high school
6	奥伊斯嘉上海日本语幼儿园	Oisca Shanghai Japanese Kindergarten	No. 16, Lane 445, West Tianshan Road	Kindergarten
7	奥伊斯嘉上海日本语幼儿园	Oisca Shanghai Japanese Kindergarten	No. 20, Lane 715, Maotai Road	Kindergarten
8	上海宋庆龄幼儿园国际部	Soong Ching Ling Kindergarten	No. 3908, Hongmei Road	Kindergarten
9	上海日本人教育补习中心	Shanghai Educational Academy	Rm. 503, 5/F Victoria Business Building, No. 118 East Ronghua Avenue	Primary - senior high school
10	上海飞翔日本人补习中心	Shanghai Hishou Japanese Continuation Study Center	Rm. 504 - 505, Victoria Business Building, No. 96, East Ronghua Avenue	Primary - senior high school
11	上海青海韩国人补习中心	Shanghai Qinghai Korea Academy	Rm. 705 - 707, North Building Vanke Square, No. 37, South Shuicheng Road	
12	上海新大一韩国人补习中心	Shanghai Kosei Academy	3/F, Block C, No. 96, East Ronghua Road	High school
13	上海一麦日本人补习中心	Shanghai Imai Nihon Jinhosyutyushin	A313, No. 2633, West Yan'an Road	Kindergarten - senior high school
14	上海骏台日本人补习中心	Shanghai Sundai School	Rm. B308, Shanghai-Mira Commercial Center, No. 2633, West Yan'an Road	Primary - junior high school

4. Hongkou District

No.	School (Teaching Site)	English Name	Address	Educational System
1	上海外国语大学附属外国语学校国际部	Shanghai Foreign Language School Affiliated To SISU, International Division	No. 295, North Zhongshan Road No. 1	High school

5. Yangpu District

No.	School (Teaching Site)	English Name	Address	Educational System
1	复旦大学附属中学国际部	International Division, High School Affiliated to Fudan University	No. 325, 384, Guoquan Road	Primary - senior high school
2	上海杨浦法国学校 (筹)	Shanghai Yangpu French School (In Preparation)	Yangpu District	Kindergarten - senior high school
3	上海杨浦德国学校 (筹)	Shanghai Yangpu German School (In Preparation)	Yangpu District	Kindergarten - senior high school

6. Minhang District

No.	School (Teaching Site)	English Name	Address	Educational System
1	上海美国学校	Shanghai American School	No. 258, Jinfeng Road	Kindergarten - senior high school
2	上海日本人学校	Shanghai Japanese School	No. 3185, Hongmei Road	Primary school
3	上海新加坡国际学校	Shanghai Singapore International School	No. 301, Zhujian Road	Kindergarten - senior high school
4	上海韩国学校	Shanghai Korean School	No. 355, Lianyou Road	Primary - senior high school
5	上海英国学校	The British International School, Shanghai	No. 111, Jinguang Road	Kindergarten - senior high school
6	上海不列颠英国学校	Britannica International School, Shanghai	No. 1988, Gubei Road	Kindergarten - senior high school
7	上海德威英国国际学校	Shanghai Dulwich International School	No. 1935, Shuguang Road	Kindergarten - senior high school
8	上海美丘第一幼儿园	Shanghai Utsukushigaoka Montessori Kindergarten	No. 22, Mandarin City, No. 788, Hongxu Road	Kindergarten
9	东进上海日本人幼儿园	Shanghai Toshin Japanese Kindergarten	No. 3081, Hongmei Road	Kindergarten
10	上海泰宁国际幼儿园	Tiny Tots International Preschool and Kindergarten	No. 50, Gumei Road	Kindergarten
11	上海恩吉尔幼儿园	Shanghai Angel Kindergarten	No. 375, Hongzhong Road	Kindergarten
12	东进上海日本人补习中心	Shanghai Toshin After School	No. 10, Lane 1829, Hongqiao Road	Tutorial

7. Qingpu District

No.	School (Teaching Site)	English Name	Address	Educational System
1	上海德国学校	German School Shanghai	No. 350, Gaoguang Road	Kindergarten - senior high school
2	上海法国学校	Shanghai French School	No. 350 Gaoguang Road	Kindergarten - senior high school
3	上海西华国际学校	Western International School of Shanghai	No. 555 Lianmin Road	Kindergarten - senior high school
4	上海宋庆龄学校 国际部	Shanghai Soong Ching Ling School International Division	No. 2 Yehui Road	Primary school
5	上海宋庆龄幼儿园 国际部	Soong Ching Ling Kindergarten	No. 1 Yehui Road	Kindergarten



Part 4 Profile of Schools for Children of Foreign Personnel in Shanghai

This section is intended to provide the reader with the most concise basic conditions of the schools for the children of foreign personnel in Shanghai. The list of schools includes the schools' official website address, please log on the official website or contact the school for details.



1. Shanghai American School

Distribution of Teaching Sites	Minhang District, Pudong New Area		
Students at School (person)	3,064	Number of Teachers (Person)	480
Enrollment Scope	Pre-school to high school		
Phase of Schooling	Curriculum	Tuition (RMB/Year)	
Pre-school	American	157,000	
Primary school	American	222,000	
Junior high school	American	227,000	
Senior high school	American AP/APcapstone/IB	237,000	
Contact	www.saschina.org +86 (21) 6221 1445		





2. Shanghai Japanese School

Distribution of Teaching Sites	Minhang District, Pudong New Area	
Students at School (Person)	2,504	
Number of Teachers (Person)	157	
Enrollment Scope	Primary school - senior high school	
Phase of Schooling	Curriculum	Tuition (RMB)
Primary School	Japanese	2,085/month; Admission and facility fees, totally RMB 20,000 (collected at admission)
Junior High School	Japanese	
Senior High School	Japanese	RMB 9,335/month; Admission and facility fees, totally RMB 27,750 (collected at admission)
Contact	www.srx2.net.cn +86 (21) 6406 8027	





3. Yew Chung International School of Shanghai

Distribution of Teaching Sites	Changning District, Pudong New Area	
Students at School (Person)	2,400	
Number of Teachers (Person)	350	
Enrollment Scope	Age 2-18	
Phase of Schooling	Curriculum	Tuition (RMB/Year)
Pre-school	School-based curriculum	127,000-204,000
Primary School	British	238,000-243,000
Junior High School	British, IGCSE	269,000-274,000
Senior High School	IGCSE, IB	274,000-279,000
Contact	www.ycis-sh.com +86(21) 2226 7666	





4. German School Shanghai

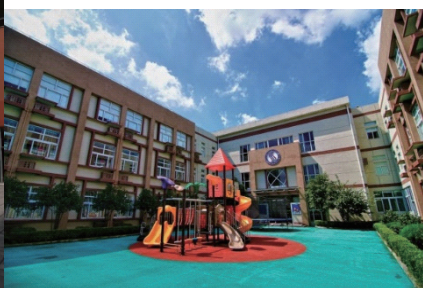
Distribution of Teaching Sites	Qingpu District, Pudong New Area		
Students at School (Person)	1,300		
Number of Teachers (Person)	150		
Enrollment Scope	Age 1.5-18		
Phase of Schooling	Curriculum	Tuition and Others (RMB/Year)	
Pre-school	German	98,200	Down payment: 75,000/person down payment; School Committee Dues:600 /family
Primary School	German	141,200	
Junior High School	German		
Senior High School	German		
Contact	www.ds-shanghai.de +86(21)3976-0555 +86(21)6897 5508		



5. Shanghai French School

Distribution of Teaching Sites	Qingpu District, Pudong New Area	
Students at School (Person)	1,600	
Number of Teachers (Person)	200	
Enrollment Scope	Age 3-18	
Phase of Schooling	Curriculum	Tuition (RMB/Year)
Pre-school - Junior High School	French	81,800-141,950
Senior High School	French, IBDP	
Contact	http://www.lyceeshanghai.com/ +86 (21) 3976 0555 +86 (21) 6897 6589	





6. Shanghai Singapore International School

Distribution of Teaching Site	Minhang District, Xuhui District	
Students at School (Person)	1,300	
Number of Teachers (Person)	200	
Enrollment Scope	Pre-school– Grade 12	
Phase of Schooling	Curriculum	Tuition (RMB/Year)
Pre-school	Singaporean	117,500
Primary School	PYP	157,000
Junior High School	Pre IGCSE/IGCSE	181,800-202,000
Senior High School	IBDP, IBCP	
Contact	www.ssis.asia +86(21) 6221 9288 +86(21) 6496 5550	





7. Shanghai Community International School

Distribution of Teaching Sites	Pudong New Area, Changning District	
Students at School (Person)	1,700	
Number of Teachers (Person)	168	
Enrollment Scope	Pre-school-senior high school	
Phase of Schooling	Curriculum	Tuition (RMB/Year)
Pre-school	American	200,000-220,000
Primary School	American	
Junior High School	American	225,000-245,000
Senior High School	American, IBDP	
Contact	www.scis-his.org admission@scis-his.org	





8. Rainbow Bridge International School

Distribution of Teaching Site	Changning District	
Students at School (Person)	431	
Number of Teachers (Person)	95	
Enrollment Scope	Age 1.5 - 14	
Phase of Schooling	Curriculum	Tuition (RMB/Year)
Pre-school	School-based curriculum	127,260-153,720
Primary School	IB PYP	186,660
Junior High School	IB MYP	
Senior High School	School-based curriculum	
Contact	www.hqis.org	





9. Concordia International School Shanghai

Distribution of Teaching Site	Pudong New Area	
Students at School (Person)	1,250	
Number of Teachers (Person)	130	
Enrollment Scope	Age 3-18	
Phase of Schooling	Curriculum	Tuition (RMB/Year)
Pre-school	American	150,000-202,000
Primary School	American	202,000
Junior High School	American	212,000
Senior High School	American	218,000
Contact	www.concordiashanghai.org +86 (21) 5899 0380	





10. Shanghai Korean School

Distribution of Teaching Site	Minhang District		
Students at School (Person)	1,400		
Number of Teachers (Person)	130		
Enrollment Scope	Primary school - Senior high school		
Phase of Schooling	Curriculum	Tuition (RMB/Year)	Registration Fee
Primary School	Korean	22,000	9,000
Junior High School	Korean	26,000	12,000
Senior High School	Korean	30,000	15,000
Contact	http://www.skoschool.com +86 (21) 6493 9500		





11. The British International School, Shanghai

Distribution of Teaching Site	Pudong New Area, Minhang District	
Students at School (Person)	2,510	
Number of Teachers (Person)	230	
Enrollment Scope	Age 1.5-18	
Phase of Schooling	Curriculum	Tuition (RMB/Year)
Pre-school	EYFS	200,000-280,000
Primary School	IPC	
Junior High School	IGCSE	
Senior High School	IB	
Contact	http://www.nordangliaeducation.com/ +86 (21) 5812 7455 +86 (21) 5226 3211	





12. Livingston American School Shanghai

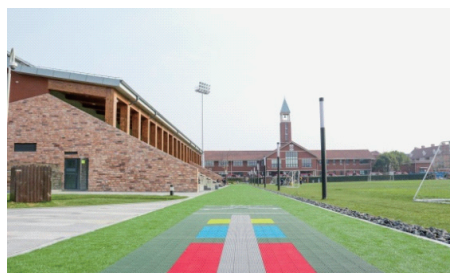
Distribution of Teaching Site	Changning District	
Students at School (Person)	629	
Number of Teachers (Person)	92	
Enrollment Scope	Age 2-19	
Phase of Schooling	Curriculum	Tuition (RMB/Year)
Pre-school	American	62,500-128,000
Primary School	American	156,000
Junior High School	American	163,800
Senior High School	American	169,000
Contact	www.laschina.org +86 (21) 6238 3511	





13. Shanghai Dulwich International School

Distribution of Teaching Sites	Pudong New Area, Minhang District	
Students at School (Person)	1,500	
Number of Teachers (Person)	226	
Enrollment Scope	Age 2 - 18	
Phase of Schooling	Curriculum	Tuition (RMB/Year)
Pre-school	British	80,000-197,000
Grade 1-2	British	225,500
Grade 3-6	British	228,000
Grade 7-9	British	249,000
Grade 10-11	IGCSE	264,000
Grade 12-13	IBDP, AP, CIE	269,500
Contact	http://www.dulwich-shanghai.cn/ +86 (21) 5899 9910	





14. Western International School of Shanghai

Distribution of Teaching Site	Qingpu District	
Students at School (Person)	780	
Number of Teachers (Person)	130	
Enrollment Scope	Age 2.5-19	
Phase of Schooling	Curriculum	Tuition (RMB/Year)
Pre-school	School-based curriculum	97,000-223,100
Primary School	PYP	
Junior High School	MYP	
Senior High School	DP, CP	
Contact	www.wiss.cn +86 (21) 6976 6388	





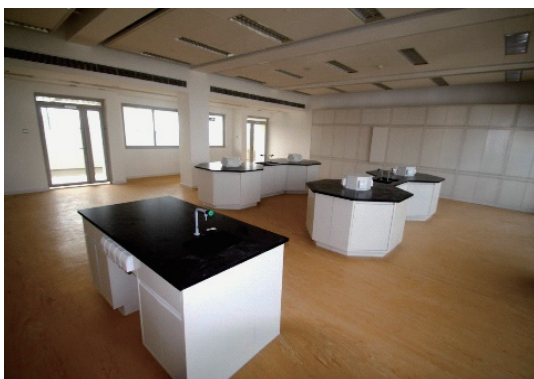
15. Britannica International School, Shanghai

Distribution of Teaching Site	Minhang District	
Students at School (Person)	150	
Number of Teachers (Person)	60	
Enrollment Scope	Age 2-18	
Phase of Schooling	Curriculum	Tuition (RMB/Year)
Preparatory Classes & Kindergarten	British	143,680
Primary School Preparatory Classes	British	170,885
Grade 1-4	British	203,975
Grade 5-6	British	209,480
Grade 7-8	British	218,600
Grade 10-11	IGCSE	223,000
Grade 12-13	A-level	226,005
Contact	www.hqis.org +86 (21) 6402 7889	



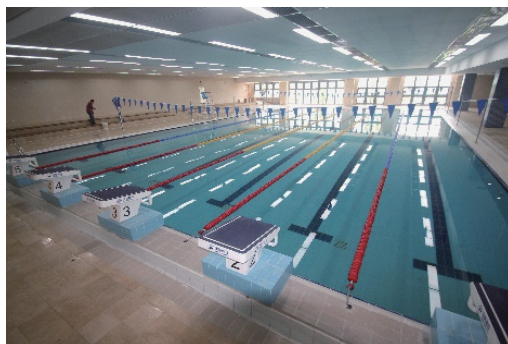
16. Wellington College International Shanghai

Distribution of Teaching Site	Pudong New Area	
Students at School (Person)	600	
Number of Teachers (Person)	126	
Enrollment Scope	Age 2-18	
Phase of Schooling	Curriculum	Tuition (RMB/Year)
Pre-kindergarten – Pre-school Preparatory Classes	British	209,500
Grade 1-2	British	243,500
Grade 3-4	British	245,400
Grade 5-6	British	248,200
Grade 7-9	British	271,700
Grade 10-11	IGCSE	288,400
Grade 12-13	IBDP	297,800
Contact	http://www.wellingtoncollege.cn/shanghai/ +86 (21) 5185 3885	



17. Shanghai Harrow School for Children of Foreign Personnel

Distribution of Teaching Site	Pudong New Area	
Students at School (Person)	132	
Number of Teachers (Person)	27	
Enrollment Scope	Age 2-18	
Phase of Schooling	Curriculum	Tuition (RMB/Year)
Kindergarten	British	199,800-281,300
Grade 1-5	British	
Grade 6-8	IGCSE	
Grade 9-13	A-Levels	
Contact	http://www.harrowshanghai.cn/ +86 (21) 6881 8282	





18. Oisca Shanghai Japanese Kindergarten

Distribution of Teaching Sites		Changning District, Pudong New Area
Students at School (Person)		212
Number of Teachers (Person)		30
Enrollment Scope		Age 2-5
Phase of Schooling	Curriculum	Tuition (RMB/Year)
Pre-school	Japanese	2,000-5,500
Contact		http://www.oisca-youchien.net +86 (21) 6238 9335

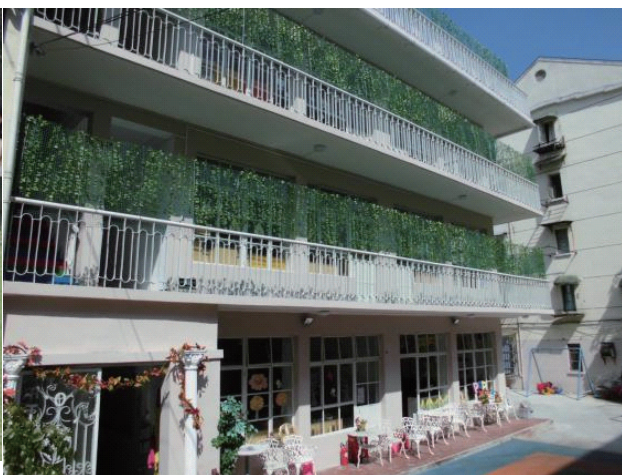




19. Shanghai Utsukushigaoka Montessori Kindergarten

Distribution of Teaching Sites	Minhang District, Pudong New Area	
Students at School (Person)	226	
Number of Teachers (Person)	37	
Phase of Schooling	Curriculum	Tuition (RMB/Year)
Pre-school	Japanese	7,300
Contact	www.montessori-sh-u.com +86 (21) 6405 6318	





20. Shanghai Toshin Japanese Kindergarten

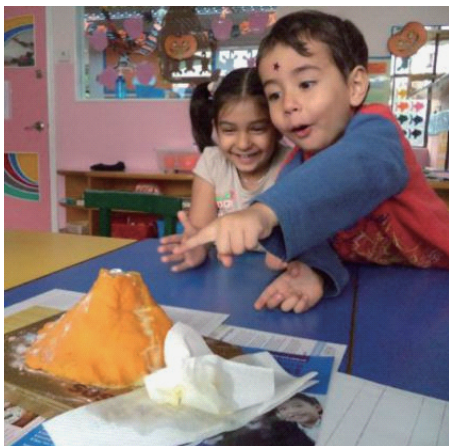
Distribution of Teaching Site	Changning District	
Students at School (Person)	40	
Number of Teachers (Person)	12	
Enrollment Scope	Age 2-6	
Phase of Schooling	Curriculum	Tuition (RMB/Year)
Pre-school	Japanese	~ 5,300
Contact	+86 (21) 6227 0522	

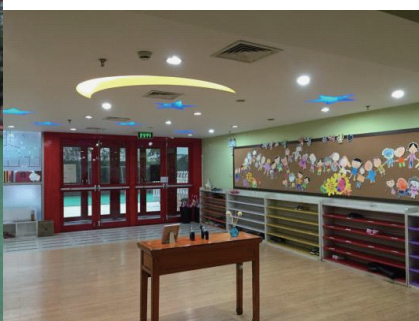




21. Tiny Tots International Pre-School and Kindergarten

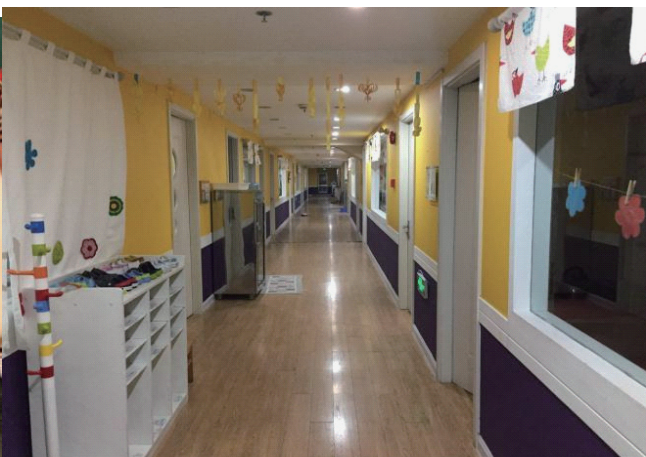
Distribution of Teaching Site	Xuhui District, Minhang District	
Students at School (Person)	150	
Number of Teachers (Person)	14	
Enrollment Scope	Age 2-6	
Phase of Schooling	Curriculum	Tuition (RMB/Year)
Pre-school	American	Full-time: 125,800 half-day: 92,800
Contact	www.tinytots.com.cn +86(21) 6431 3788	





22. Shanghai Angel Kindergarten

Distribution of Teaching Site	Minhang District	
Students at School (Person)	120	
Number of Teachers (Person)	23	
Enrollment Scope	Age 4-7	
Phase of Schooling	Curriculum	Tuition (RMB/Year)
Pre-school	Korean	4,600-5,100
Contact	+86 (21) 6401 2393	





23. Soong Ching Ling Kindergarten

Distribution of Teaching Sites	Qingpu District, Changning District	
Students at School (Person)	486	
Number of Teachers (Person)	53	
Enrollment Scope	Age 2 - 6	
Phase of Schooling	Curriculum	Tuition (RMB/Year)
Care Classes	British	130,000
Pre-Nursery		160,000
Nursery		180,000
Contact	www.sclkids.com ; +86 (21) 6975 6166*668	





24. Shanghai High School International Division

Distribution of Teaching Sites	Xuhui District, Pudong New Area	
Students at School (Person)	2,900	
Number of Teachers (Person)	500	
Enrollment Scope	Age 6-17	
Phase of Schooling	Curriculum	Tuition (RMB/Year)
Primary School	American	100,000
Junior High School	American	106,000
Senior High School	American, IBDP, AP	110,000
Contact	www.shsid.org +86 (21) 6476 5516/ 6453 3318	





25. The International Division No. 2 High School of East China Normal University

Distribution of Teaching Site	Pudong New Area	
Students at School (Person)	300	
Number of Teachers (Person)	50	
Enrollment Scope	Grade 6-12	
Phase of Schooling	Curriculum	Tuition (RMB/Year)
Junior High School	School-based curriculum	70,000
Senior High School	School-based curriculum, AP curriculum	76,000
Contact	www.hsefz.cn +86 (21) 5080 4157	





26. Shanghai Foreign Language School Affiliated To SISU, International Division

Distribution of Teaching Site	Hongkou District	
Students at School (Person)	136	
Number of Teachers (Person)	42	
Enrollment Scope	Grade 6-12	
Phase of Schooling	Curriculum	Tuition (RMB/Year)
Junior High School	School-based curriculum	76,000
Senior High School	IBDP	
Contact	world.sfls.cn +86 (21) 6516 0844	





27. Shanghai Jincai High School International Division

Distribution of Teaching Site	Pudong New Area	
Students at School (Person)	430	
Number of Teachers (Person)	70	
Enrollment Scope	Grade 1-12	
Phase of Schooling	Curriculum	Tuition (RMB/Year)
Primary School	IPC	68,000
Junior High School	IB MYP	76,000
Senior High School (English)	IBDP	
Senior High School (Chinese)	School-based curriculum	56,000
Contact	www.jcid.cn +86 (21) 5033 1668 +86 (21) 5089 8887	





28. International Division, High School Affiliated to Fudan University

Distribution of Teaching Site	Yangpu District	
Students at School (Person)	300	
Number of Teachers (Person)	49	
Enrollment Scope	Chinese department: grade 10-12,English department: grade 1-12	
Phase of Schooling	Curriculum	Tuition (RMB/Year)
Grade 1-8	American	76,000
Grade 9-10	School-based curriculum	
Grade 11-12	IBDP, AP	
Contact	Chinese department: http://fdischina.fdfz.cn +86 (21)5552 0127 English department: http://fdis.net.cn +86 (21)6511 1292	





29. Shanghai Experimental School International Division

Distribution of Teaching Site	Xuhui District, Pudong New Area	
Students at School (Person)	574	
Number of Teachers (Person)	121	
Enrollment Scope	Age 7-16	
Phase of Schooling	Curriculum	Tuition (RMB/Year)
Primary School	School-based curriculum	50,000
Junior High School	AP, A-level	56,000
Contact	www.ses.sh.edu.cn ; +86 (21) 6470 1913; +86 (21) 5086 6128	

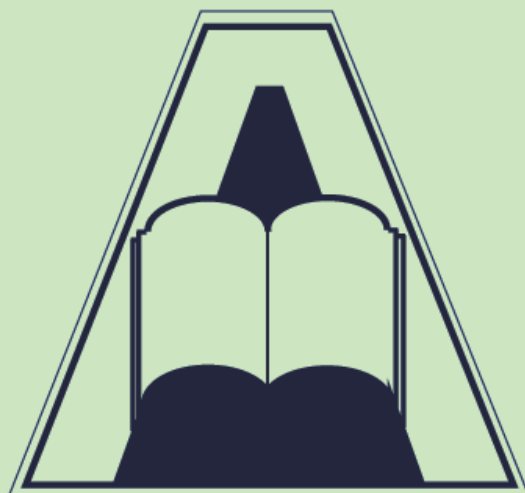




30. Shanghai Soong Ching Ling School International Division

Distribution of Teaching Site	Qingpu District	
Students at School (Person)	900	
Number of Teachers (Person)	18	
Enrollment Scope	Grade 1-8	
Phase of Schooling	Curriculum	Tuition (RMB/Year)
Primary School	American	96,000
Junior High School	American	120,000
Contact	www.sclschool.org ; +86 (21) 6975 6670	





31. Shanghai Educational Academy

Distribution of Teaching Sites	Changning District, Pudong New Area
Students at School (Person)	200
Number of Teachers (Person)	8
Enrollment Scope	Primary school - senior high school
Phase of Schooling	Curriculum
Primary School - Senior High School	Japanese
Contact	http://shanghai-academy.com +86 (21) 6209 8793 +86 (21) 5032 9311



32. Toshin International After School

Distribution of Teaching Site	Pudong New Area	
Students at School (Person)	44	
Number of Teachers (Person)	8	
Enrollment Scope	Grade 1 - senior high school	
Phase of Schooling	Curriculum	Tuition (RMB/Year)
Primary School	Japanese	Grade 1–3: 720 Grade 4–6: 1,440-2,160
Junior High School	Japanese	2,160-2,880
Senior High School	Japanese	
Contact	+86 (21) 6227 0522; toshinshj@outlook.com	



33. Shanghai Hishou Japanese Continuation Study Center

Distribution of Teaching Site	Changning District	
Students at School (Person)	25	
Number of Teachers (Person)	1	
Enrollment Scope	Age 6-18	
Phase of Schooling	Curriculum	Tuition (RMB/Year)
Primary School - Senior High School	Japanese	1,000
Contact	hishoukoji@yahoo.co.jp +86 (21) 6270 7162	





34. Shanghai Qinghai Korea Academy

Distribution of Teaching Site	Changning District	
Students at School (Person)	98	
Number of Teachers (Person)	9	
Enrollment Scope	14-18	
Phase of Schooling	Curriculum	Tuition (RMB/Year)
Junior High School	Korean	2,400
Senior High School	Korean	3,200
Contact	www.academian.co.kr; +86 (21) 6270 2730	





35. Shanghai Kosei Academy

Distribution of Teaching Site	Changning District	
Students at School (Person)	55	
Number of Teachers (Person)	8	
Enrollment Scope	Primary school - senior high school	
Phase of Schooling	Curriculum	Tuition (RMB/Year)
Primary School - senior high school	Korean	2,000-3,500
Contact	+86(21)6209 9445	





36. Shanghai Imai Nihon Jinhosyutyushin

Distribution of Teaching Site	Changning District, Pudong New Area
Phase of Schooling	Primary school - senior high school
Curriculum	Japanese
Contact	+86(21)5266 0119 +86(21)5045 1522

37. Shanghai Sundai School

Distribution of Teaching Site	Changning District, Pudong New Area	
Students at School (Person)	408	
Enrollment Scope	Grade 2-9	
Phase of Schooling	Curriculum	Tuition (RMB)
Primary School	Japanese	1,400-2,400/semester
Junior High School	Japanese	
Contact	www.sundai-kaigai.jp +86 (21) 6209 8833	